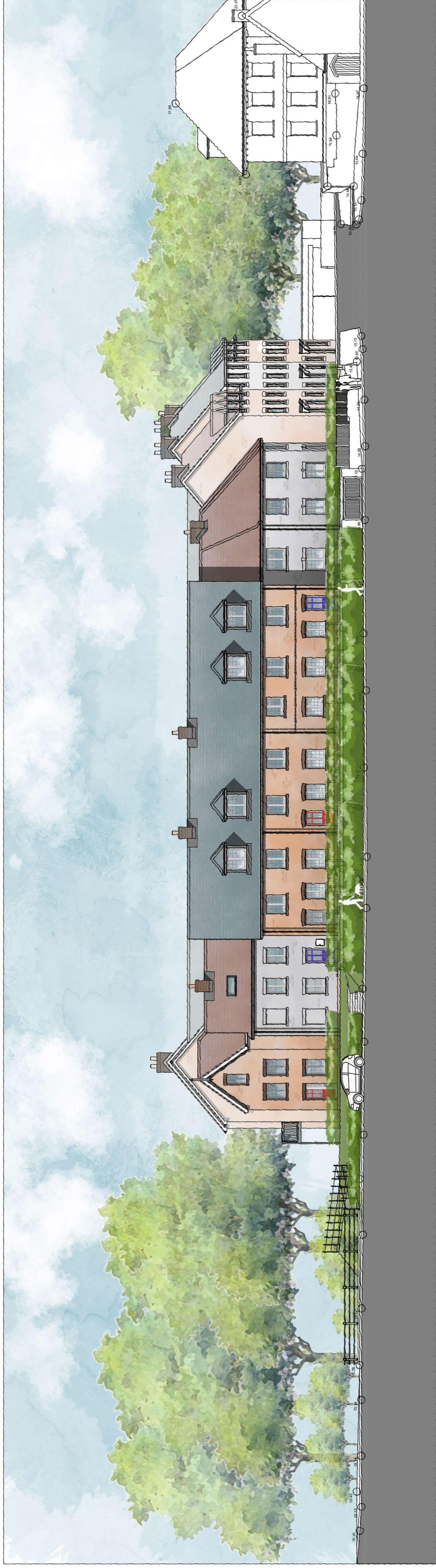


REVISIONS

Rev.	By	Date
		Aug'23
KLS		
A		General minor amendments. Stone cladding on flat, to pitched. Brick cladding added. Front doors added to flats 5, 6, & 7. Roof over flat 4b lowered. Roof over flat 4c lowered. Arched heads and stone cills added.
Nov'23		
KLS		
B		General minor amendments. Dormers aligned with windows below. Front doors added to flats 5, 6, & 7. Roof over Guest Suite lowered. Roof over Guest Suite lowered. Stone heads and cills omitted.



Palmerston Street Contextual Elevation



Key to Elevations

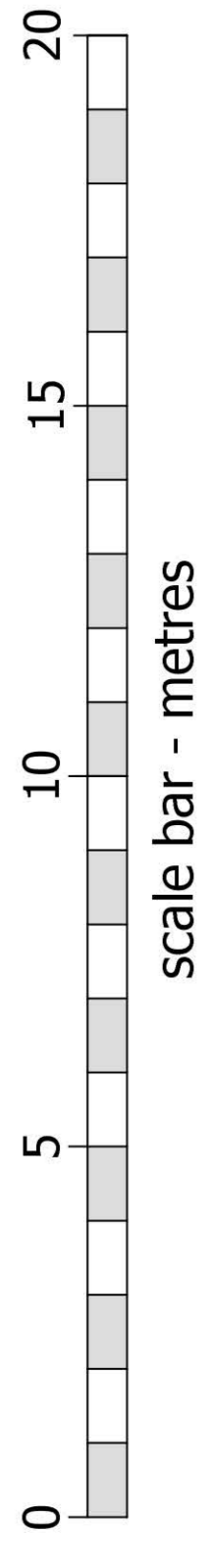


- 1 Prefabricated chimney
- 2 Natural slate roof tiles
- 3 Red clay roof tiles
- 4 Dormer windows
- 5 Black uPVC gutters and fascia
- 6 Red facing brick
- 7 Matching brick window heads & cills
- 8 Painted heads & cills
- 9 White-painted brickwork
- 10 Projecting GFR canopies over flat doors
- 11 Tax window
- 12 White uPVC casement windows
- 13 Painted metal balustrades
- 14 Feature cast stone entrance portico
- 15 Red clay tile hanging
- 16 Feature brick ribbon

palmerston street elevation

broadwater road

Elevation A-A to Palmerston Street



©CHURCHILL RETIREMENT LIVING

**planning issues**  
TOWN PLANNING AND ARCHITECTURAL DESIGN

Rob Jackson RIBA

Churchill House - Farnside  
Ringwood - Hampshire RG30 2SG  
Tel: 01493 442100  
Fax: 01493 442101  
E-mail: design@planningissues.co.uk

Client

**Churchill Retirement Living**

Project Title

Retirement Living Apartments  
Edwina Mountbatten House  
Romsey  
SO41 8GH

Drawing Title

PROPOSED PALMERSTON STREET ELEVATION  
PLANNING APPLICATION

Scale: 1:100 @ A1

Date: JUNE 2023

Drawn: KLS

Checked: RJ

Drawing No. 10123RS - PA06

Rev: B